

Dental Educational Resources Available!

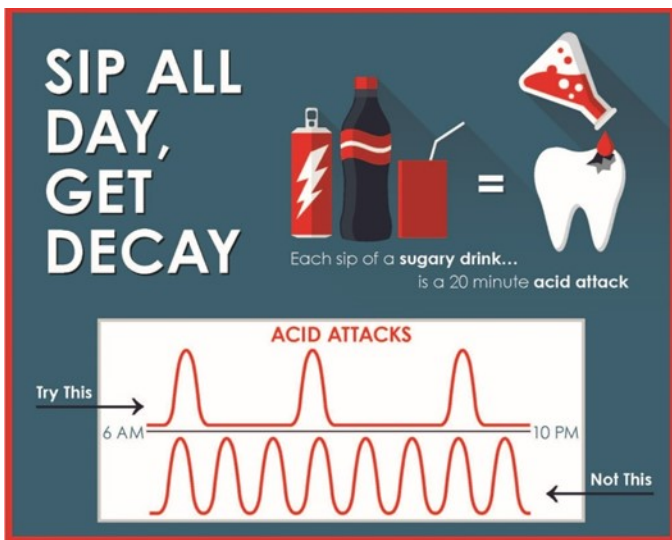
Oral Health Kansas has several resources available to teach kids and adults how to make good choices about their oral health every day. Some can be downloaded or accessed online; one is available to borrow, and others may be purchased. They can be used in schools, libraries, health departments, clinics, and anywhere else you can imagine. Check out the resources, and let us know if there are other resources that can be of help to you!

Tips and Tricks

Dozens of one-page fact sheets share tips for families about everything from pregnancy and teething to braces and preparing for a dental visit are available as free downloads. They are in both English and Spanish at www.oralhealthkansas.org/consumers.html.

Magnets

Oral Health Kansas has two magnets available to show families how to be aware of what they drink. Each is a 5.5" x 4.25" magnet that is a great reminder on refrigerator doors.



Did you know?

Each time you take a sip of a sugary drink, your teeth experience a 20-minute acid attack.

Drinking sugary drinks only at mealtimes will ensure teeth have limited exposure to acid, which can cause tooth decay.

Sip All Day Get Decay Magnets

- 250 magnets for \$225
- 500 magnets for \$350
- 1000 magnets for \$600

Did you know?

If you drink one 20-ounce soda each day for a month, you will have consumed the equivalent of a five pound bag of sugar!

Consider the impact that much sugar can have on diabetes, weight, heart disease, and oral health.

Five Pounds of Sugar Magnets

- 250 magnets for \$225
- 500 magnets for \$350
- 1000 magnets for \$600



Dental Acid Attack Kit

This fun experiment gets people involved in seeing how their food and beverage choices affect their oral health. It's great for all ages and can be used in classrooms, at health fairs, and during library story times.



The Dental Acid Attack Kit contains everything you need to demonstrate the effect of sugary foods and drinks on teeth.

Each kit can be used up to 75 times, and the supplies inside can be refilled.

Coming soon:

- A classroom-size kit that will allow up to 20 people try the demonstration at the same time
- A video to show how the experiment works

Non Profit Price: \$40 For Profit Price: \$60

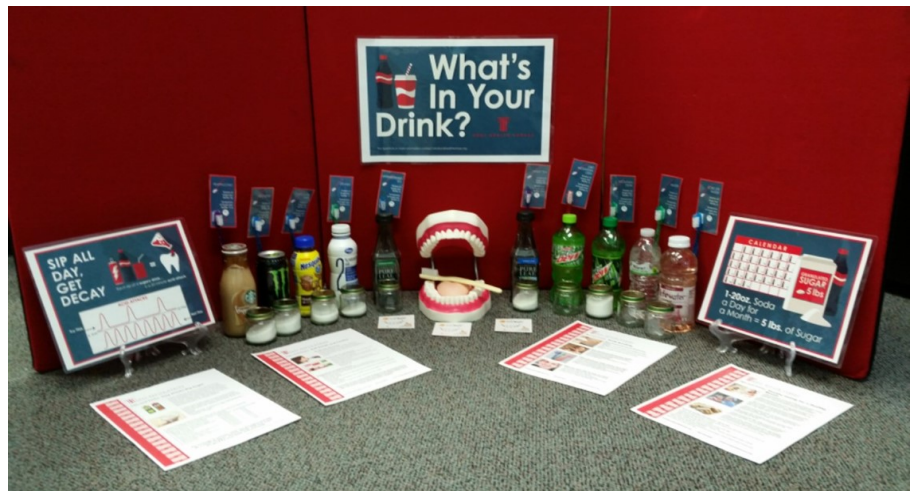
Mighty Molar Cavity Quiz

Are you and your family at risk for cavities? Take the Mighty Molar Cavity Quiz to assess your risk. It's a short on-line quiz that helps you determine if your habits are putting you at risk for developing cavities. Check it out at www.cavityquiz.org!

Sugary Drink Display

The Sugary Drink Display is a fun and educational way to discover the amount of sugar in popular drinks. Perfect for all ages, the drink display shows how many teaspoons are in popular drinks such as chocolate milk, sports drinks, soda, and more.

We make free month-long reservations for the displays but if you'd rather have your own to use as often and as long as you'd like, you can purchase a drink display kit.



Each kit contains the following:

- 10 commonly purchased beverages
- 10 glass jars with corresponding sugar amounts
- Labels for each drink listing its sugar amount
- 4 oral health educational flyers on juice, soda, healthy eating, and toothbrushing
- 3 laminated posters

All written materials are in English and Spanish. Oral health books and a large mouth model can be added to your order to give extra punch to your message.

Non Profit Price: \$40 For Profit Price: \$60

Order Form

Email this form to info@oralhealthkansas.org or call us at 785-235-6039 to order. Items will be shipped upon receipt of payment.

Organization _____

Organization's status: ☐ Non profit ☐ For profit

Contact Person _____

Address _____

City _____ State _____ Zip _____

Email _____ Phone _____

Prices effective June 1, 2019

Sip All Day Get Decay Magnets

- ☐ 250 magnets (\$225) ☐ 500 magnets (\$350) ☐ 1000 magnets (\$600)
- ☐ Shipping (pick-up is free) Yes _____ \$5

Five Pounds of Sugar Magnets

- ☐ 250 magnets (\$225) ☐ 500 magnets (\$350) ☐ 1000 magnets (\$600)
- ☐ Shipping (pick-up is free) Yes _____ \$5

Dental Acid Attack Kits

- Quantity _____ \$40 / \$60
- ☐ Shipping (pick-up is free) Yes _____ \$10 in-state/\$15 out-of-state

Sugary Drink Display:

- ☐ Adult (includes coffee & tea) Quantity _____ \$40 / \$60
- ☐ Child (includes juices & energy drinks) Quantity _____ \$40 / \$60

Additional accessories:

- ☐ Two children's oral health books Quantity _____ \$15
- ☐ Mouth model and toothbrush Quantity _____ \$49
- ☐ Plastic carry tote Quantity _____ \$25
- ☐ Shipping (pick-up is free) Yes _____ \$20

Total \$ _____

Payment Information

☐ Check (payable to Oral Health Kansas, Inc.)

☐ Please send invoice

☐ Credit Card

Credit Card Number _____ Exp Date _____ C V V _____

Card Holder Signature _____ Card Zip Code _____

Please submit this form and payment to:

Oral Health Kansas, Inc.

712 S. Kansas Ave., Suite 412, Topeka, KS 66603

info@oralhealthkansas.org

Phone: 785-235-6039

Fax: 785-233-5564



ORAL HEALTH KANSAS
ADVOCACY • PUBLIC AWARENESS • EDUCATION

www.oralhealthkansas.org